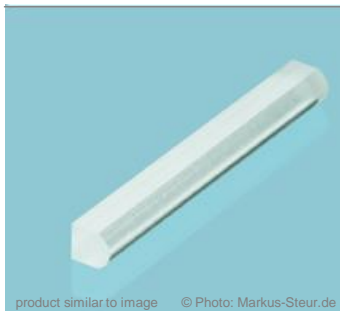


Fast Axis Collimator - FAC1100



General Description:

Aspherical cylindrical lens for the collimation of the fast axis of diode lasers.

| **Advanced Optical Solutions** |

Specification Data

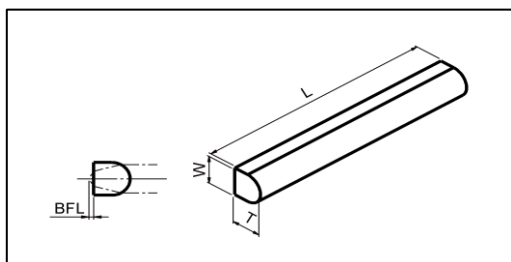
	Unit	Value
Material		S-TIH53 (Ohara)
Length (L)	mm	12.0 ± 0.05
Width (W)	mm	1.50 ± 0.05
Thickness (T)	mm	1.72 ± 0.01
Clear aperture	mm ²	11 x 1.4
Surface quality @ 633 nm		λ/4 (typically)
Refractive index n @ 950 nm		1.815
Effective focal length (EFL) @ 950 nm	mm	1.10
Back focal length (BFL) @ 950 nm	mm	0.152
Numerical aperture (NA)		0.7
Standard coating - AR	nm	790 - 990
Transmission	%	> 99
Power within an angle of ± 0.6 mrad (*)	%	> 85

Product Codes

AR-coating	Length 12mm
790 - 990 nm	ZLE001955

On request

Customized coating
Customized length



(*) Valid for an emitter-height of 1µm and no smile of the laser diode.

RoHS compliant
2002/95/EG

Copyright © 2011 LIMO GmbH. All rights reserved. All LIMO products are patent pending. Subject to change without notice.

Version May 16, 2019